



METAL EARTH

2018 FALL FIELD TRIP

Seven trips to highlight 2018 fieldwork

ABOUT METAL EARTH

The Mineral Exploration Research Centre (MERC) is a collaborative centre for mineral exploration research and education supported by industry, government and Laurentian University. MERC is the lead organization on the Metal Earth project. MERC invites you to participate in the upcoming geology field trips to highlight recent results of Metal Earth.

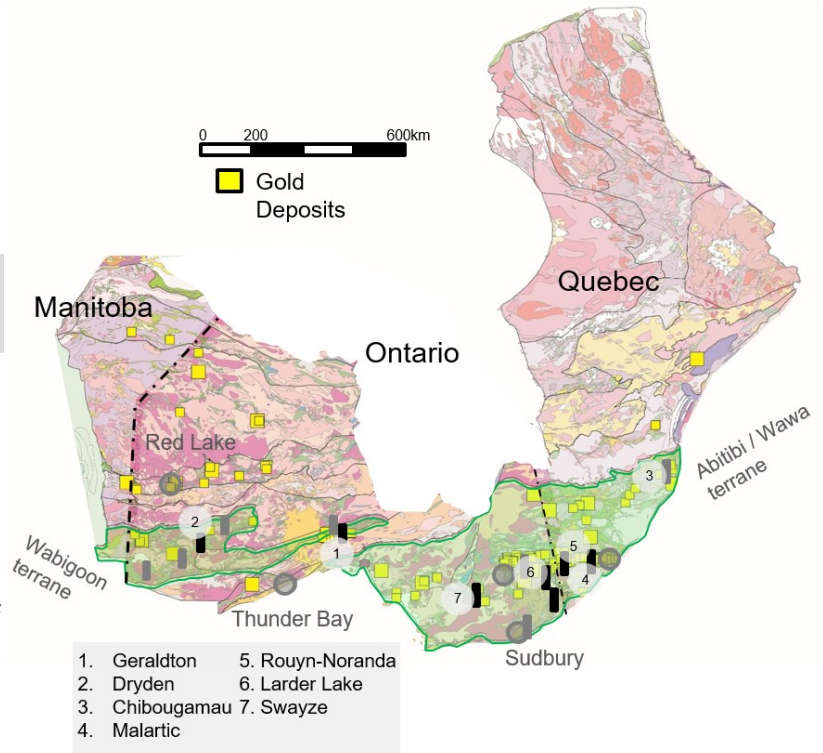
The goal of Metal Earth is to improve the science for exploration targeting and finding new ore-bodies. Metal Earth is focused on Archean greenstone belts and is resolving ore system controls at craton - greenstone belt - district - deposit scales. Metal Earth is initially focused on transects across greenstone belts centered over ancestral fault systems and volcanic centers with variable metal endowment.

REGISTRATION

To register please contact Courtney Folz cfolz@laurentian.ca. Space is limited by logistics on a first come first serve basis.

This field trip is offered at no cost. Transportation to each transect is not provided. Meeting places for each transect as well as a full field guide will be distributed prior to the trip.

The Mineral Exploration Research Centre (MERC) and Metal Earth.
<http://merc.laurentian.ca/>



FIELD TRIP OVERVIEW

MERC invites government, academia partners, and members of the exploration industry on a series of Metal Earth field trips. You can sign up for any individual trip or for all seven.

These field trips represent the opportunity to view key outcrops along the transects and discuss interpretations and research results with the lead researchers on the transects.

ITINERARY

1. Sept 5th, Geraldton, Ontario
2. Sept 7th, Dryden, Ontario
3. Sept 10th, Chibougamau, Quebec
4. Sept 12th, Malartic, Quebec
5. Sept 13th, Rouyn-Noranda, Quebec
6. Sept 14th, Larder Lake, Ontario
7. Sept 15th, Swayze, Ontario



Laurentian University
Université Laurentienne

HARQUAIL SCHOOL OF EARTH SCIENCES
 ÉCOLE DES SCIENCES DE LA TERRE